

Stainless-Steel Semi-open Impeller Pumps

Applications

Suitable for circulation cleaning system of various production lines and transporting media containing impurities.

Performance limits

- Max. solid diameter : 14mm
- Max. working pressure: 8bar
- Liquid temperature: -15°C to 80°C
- Can be connected with threaded tube or hose.
- This pump can be perform at full head without overloading motor.

Materials

Casing, Back cover, Impeller and pump shaft : SUS 304 material.
Motor casing : Aluminum-alloy.

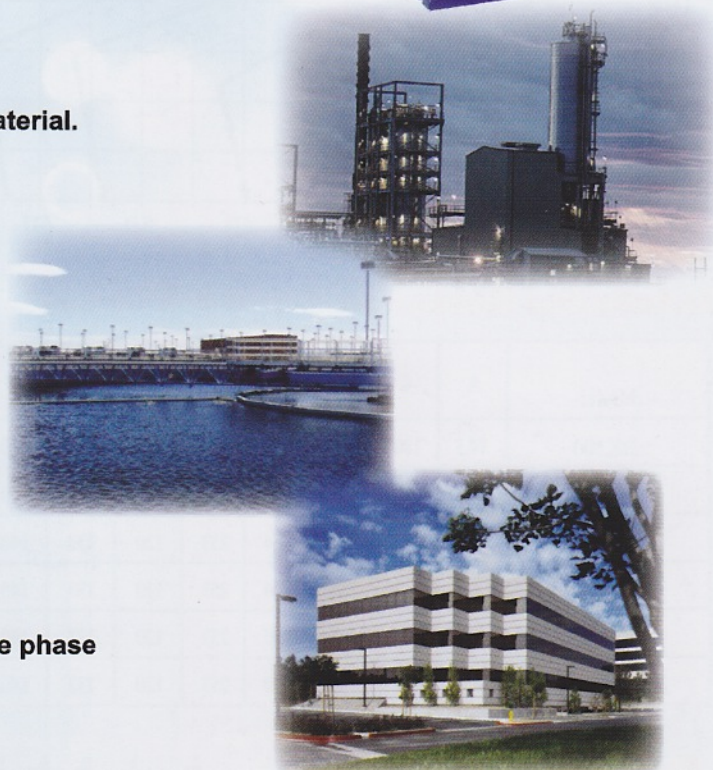
Motor

- Continuous duty
- Insulation class : F
- Protection class : IP55
- Ambient temperature range : 15°C to 40°C
- Wetted parts material : SUS 304 or *SUS 316
(* By Special Request)

Model Code

BK 200 D

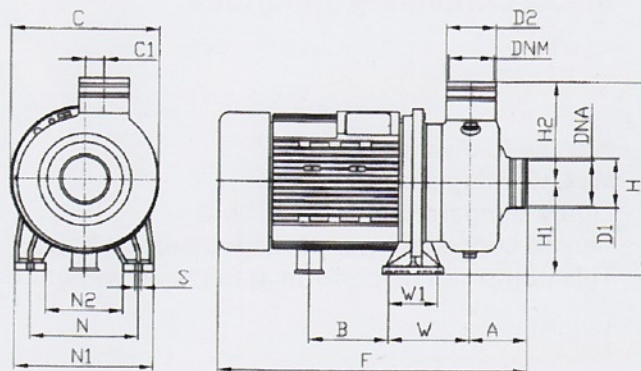
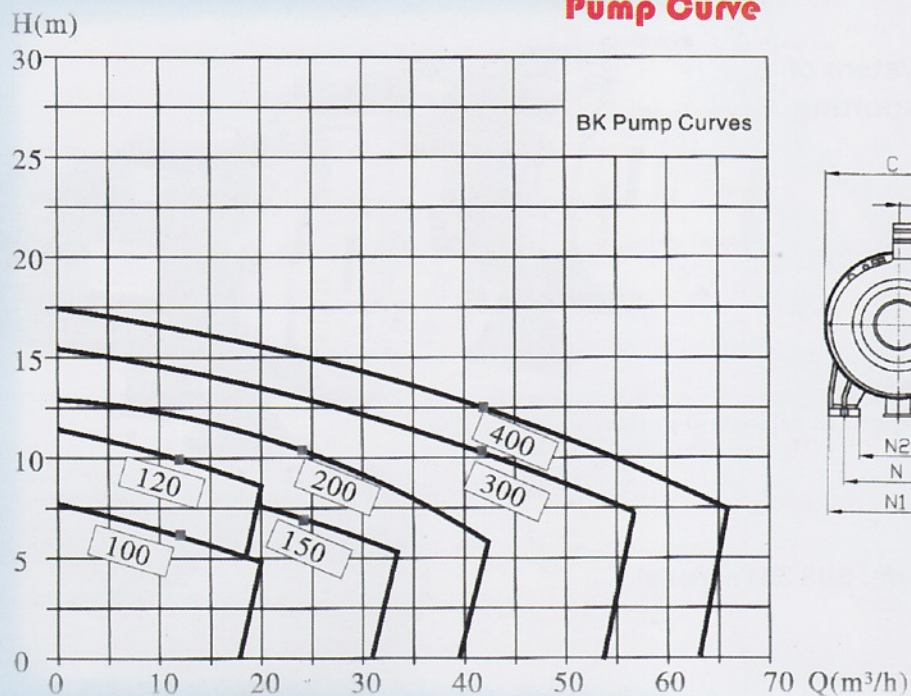
D : single phase, without D : three phase
Motor Power : 2HP
Semi-open impeller pump



Performance Data

Model		Power		Capacity									
Single phase 220V 50HZ	Three phase 415V 50HZ	kW	HP	m3/h	6	12	18	24	33	42	48	57	66
				l/min	100	200	300	400	550	700	800	950	1100
				Head (m)									
BK 100D	BK100	0.75	1.0		7	6	5						
BK 120D	BK120	0.9	1.2		11	10	9						
BK 150D	BK150	1.1	1.5		9.5	8.8	7.8	6.7	5				
BK 200D	BK200	1.5	2.0		12.7	12	11.2	10	8.3	6.5			
BK 200D	BK300	2.2	3.0		15	14	13.5	12.7	11.2	9.8	8.9	7.5	
---	BK400	3.0	4.0		17.5	16.8	16	15.2	14	12.5	11.5	9.7	7.5

Pump Curve

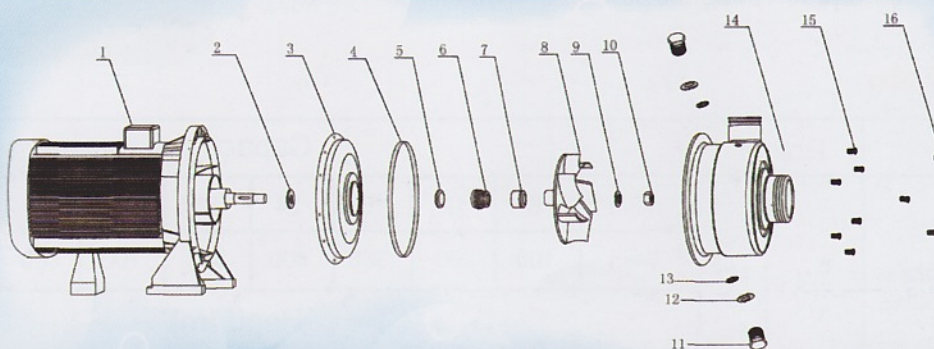


Pump Dimension

Installation Dimension

Model	A	C	C1	F	H	H1	H2	N	N1	N2	S	W	W1	B	D1	DNA	D2	DNM
BK100	74.5	170	20	358	226	108	118	120	160	80	9	84	52	90	Ø52	G1 ½"	Ø52	G1 ½"
BK120	74.5	170	20	358	226	108	118	120	160	80	9	84	52	90	Ø52	G1 ½"	Ø52	G1 ½"
Bk150	82	193	20	364	253	120	133	140	180	100	9	100	52	74	Ø63	G2"	Ø63	G2"
BK200	82	193	20	364	253	120	133	140	180	100	9	100	52	74	Ø63	G2"	Ø63	G2"
BK300	82	193	20	390	253	120	133	140	180	100	9	100	52	65	Ø80	G2 ½"	Ø63	G2"
BK400	82	193	20	390	253	120	133	140	180	100	9	100	52	65	Ø80	G2 ½"	Ø63	G2"

Parts list



No	Description	No	Description	No	Description	No	Description
1	Motor	5	Stationary Ring of Mech Seal	9	Washer	13	O-Ring
2	"V" Slinger	6	Rotary Ring of Mech Seal	10	Impeller Nut	14	Casing
3	Back Cover	7	Mech Seal Carrier	11	Priming/Drain Bolt	15	Screw
4	O-Ring	8	Impeller	12	"L" Washer	16	Screw